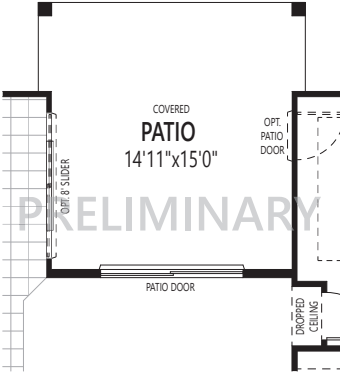
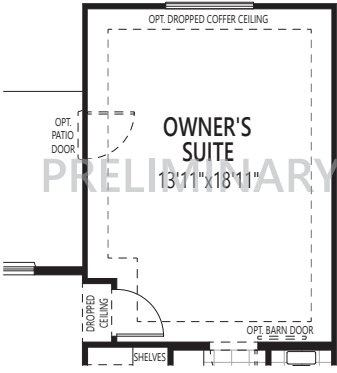


ARCHITECT'S CHOICE OPTIONS

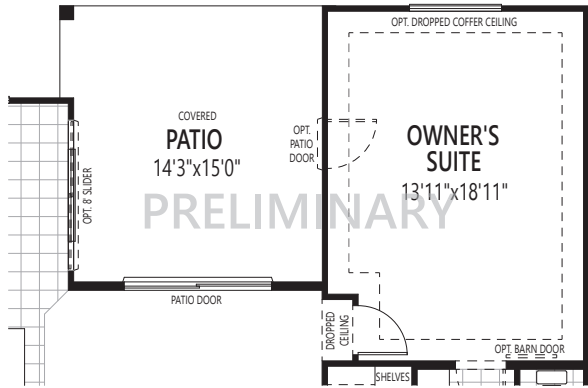
7 COVERED PATIO



8 EXTENDED OWNER'S SUITE



9 EXTENDED COVERED PATIO & OWNER'S SUITE



# THE ACACIA

THE ARBOR COLLECTION

PRELIMINARY



SPANISH

PRELIMINARY



WESTERN FARMHOUSE

PRELIMINARY

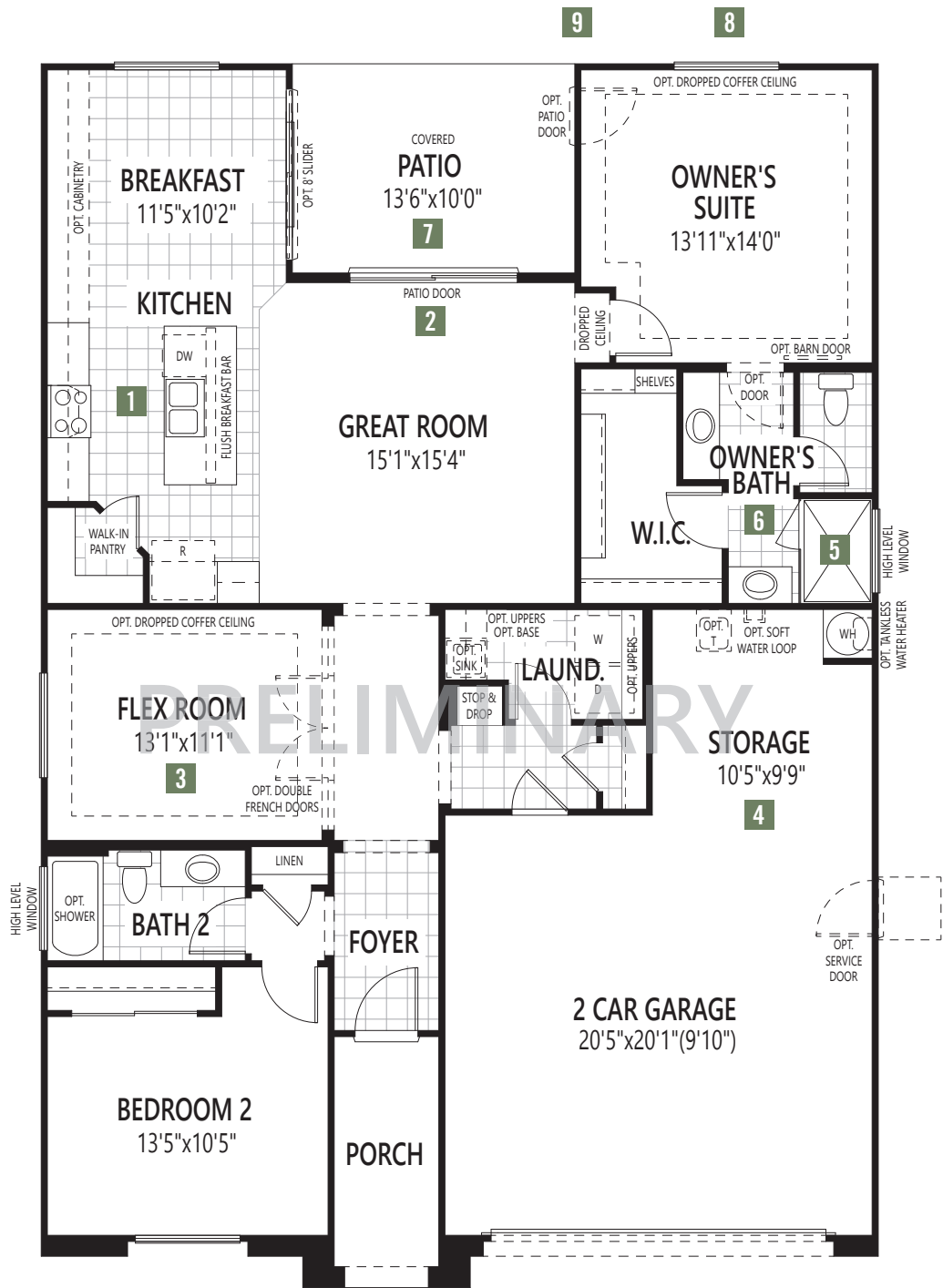


CRAFTSMAN

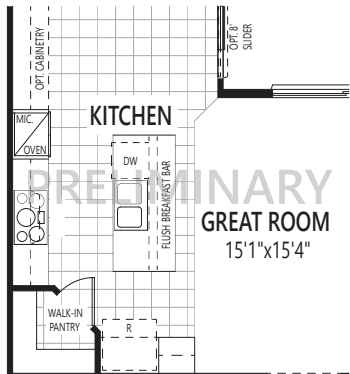
1,548 SQ.FT.

2 BEDROOM, 2 BATHROOM, 2 CAR GARAGE W/STORAGE

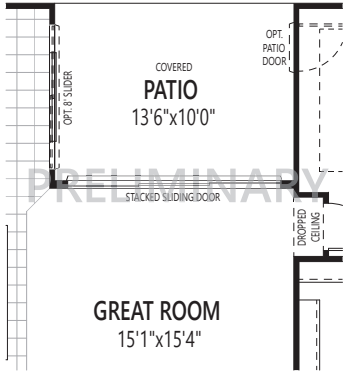




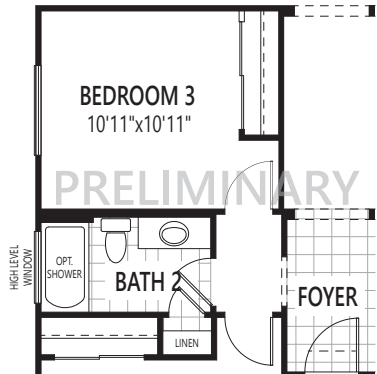
1 GOURMET KITCHEN



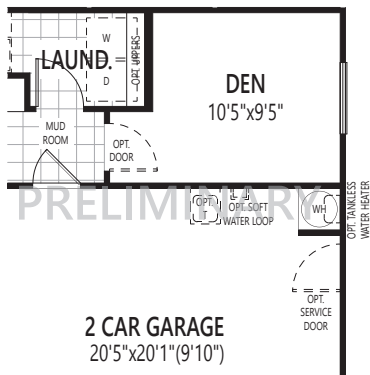
2 12' STACKED SLIDER OR CENTER SLIDER



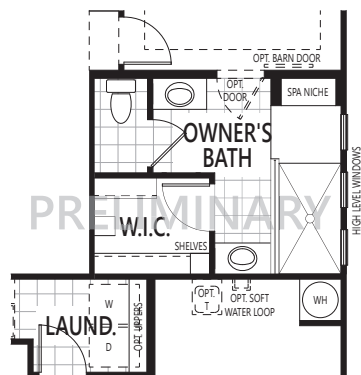
3 BEDROOM 3 IN LIEU OF FLEX



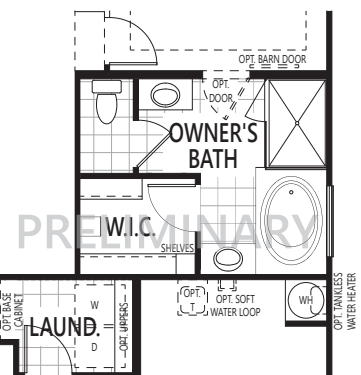
4 DEN IN LIEU OF STORAGE



5 WALK-IN SHOWER AT OWNER'S BATH



6 OWNER'S BATH OASIS



F40F All plan illustrations are artist's concept and are not part of a legal contract. Specifications, terms and conditions are subject to change without notice. These floor plans, room dimensions and exterior foot prints only apply to The Spanish Elevation as far as listed base price. Note that plan square footages and room dimensions may vary according to elevation and options selected. Plan may be built as the mirror image. Flooring illustrations are used to show area of flooring, actual flooring type is specified on the Community Feature Sheet. Please consult your New Home Counselor for more details. E.&O.E. December 2018.  
December 2018 – Mattamy Homes Limited. ROC #249191B



# THE JOURNEY TOWARD A NEW HOME

The largest purchase you will make in your lifetime is a new home. Home building is a journey of many steps. We believe that journey is much more fulfilling and enjoyable if we take it step by step, together. We hope the information in this brochure will be useful in helping you make the first important step: choosing a builder. We would be honored if you entrusted us with the creation of your new home.

THANK YOU.



# THE EMORY

THE ARBOR COLLECTION

PRELIMINARY



CRAFTSMAN

PRELIMINARY



SPANISH

PRELIMINARY



WESTERN FARMHOUSE

1,736 SQ.FT.

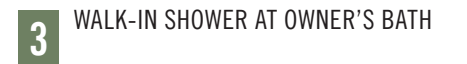
3 BEDROOM, 2 BATHROOM, 2 CAR GARAGE



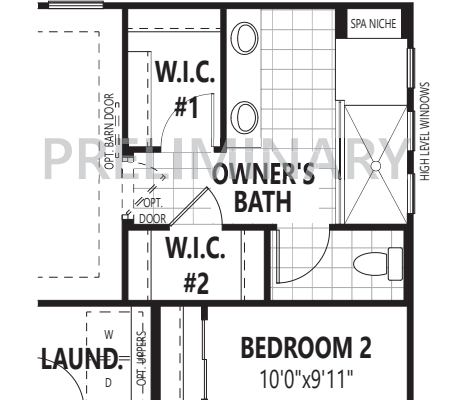
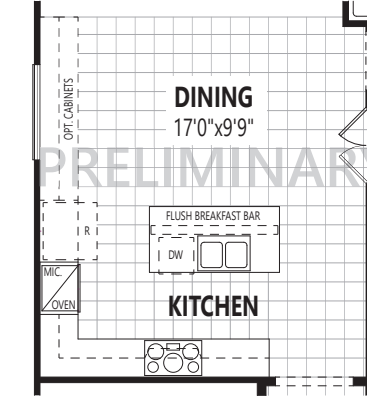


## 2 GOURMET KITCHEN

**2 GOURMET KITCHEN**

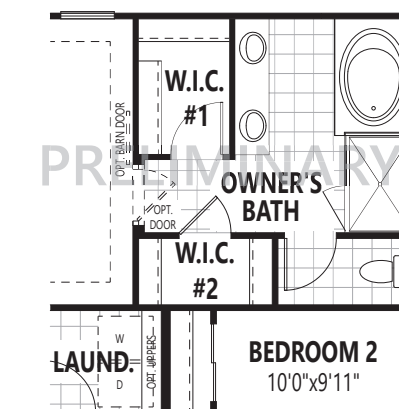


### 2 WALK-IN SHOWER AT OWNER'S BATH



#### 4 OWNER'S BATH OASIS

#### OWNER'S BATH OASIS



## 5 EXTENDED COVERED PATIO

**5** EXTENDED COVERED PATIO





# THE JOURNEY TOWARD A NEW HOME

The largest purchase you will make in your lifetime is a new home. Home building is a journey of many steps. We believe that journey is much more fulfilling and enjoyable if we take it step by step, together. We hope the information in this brochure will be useful in helping you make the first important step: choosing a builder. We would be honored if you entrusted us with the creation of your new home.

THANK YOU.



## THE IRONWOOD

THE ARBOR COLLECTION

PRELIMINARY



PRELIMINARY



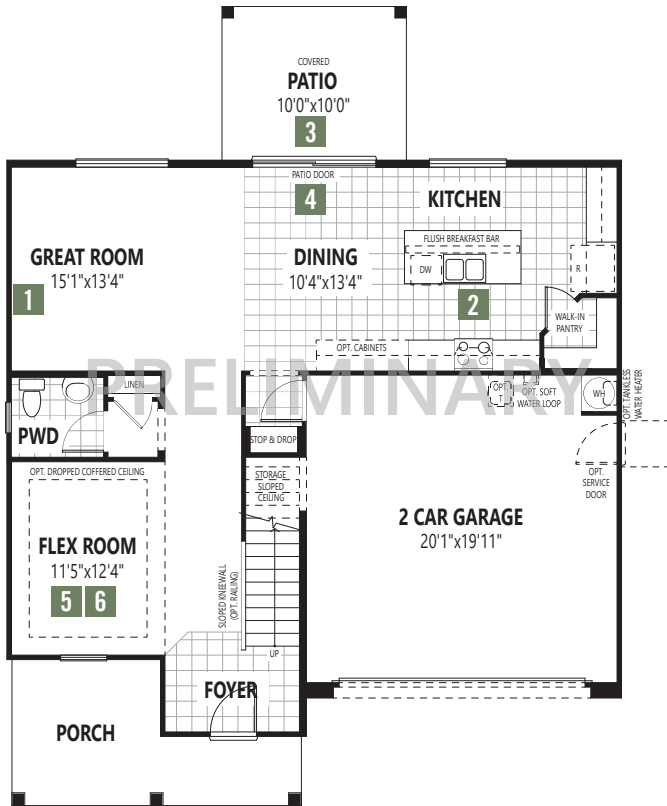
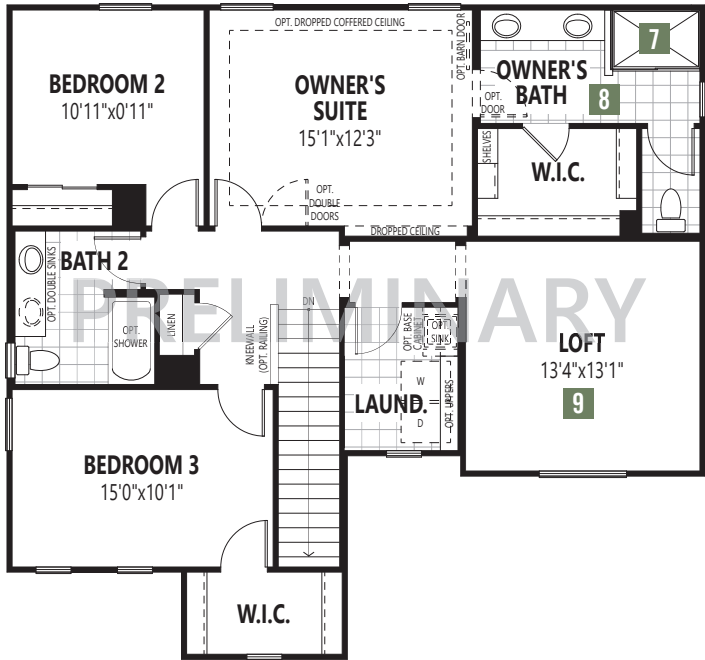
PRELIMINARY



2,142 SQ.FT.

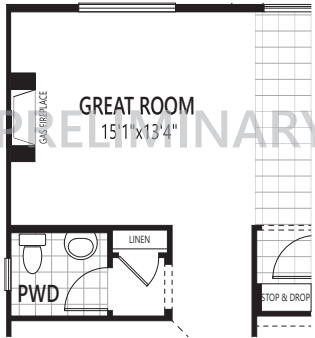
3 BEDROOM, 2.5 BATHROOM, 2 CAR GARAGE



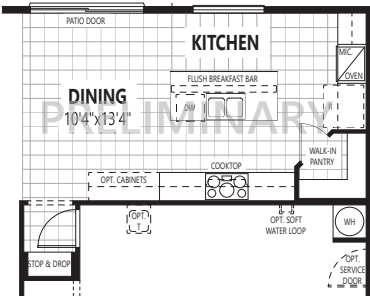


GROUND FLOOR

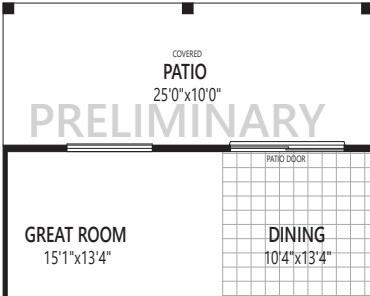
1 GAS FIREPLACE



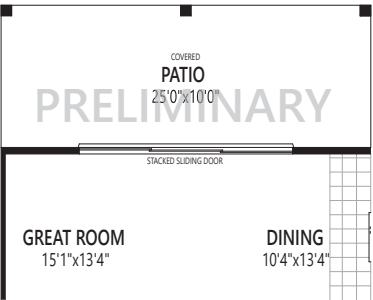
2 GOURMET KITCHEN



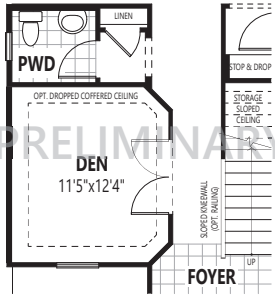
3 EXTENDED PATIO



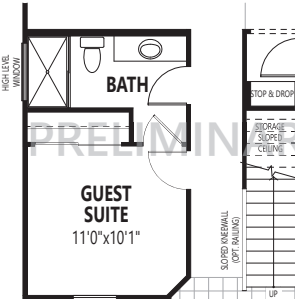
4 15' STACKED SLIDER  
(Only Available w/Extended Patio)



5 DEN IN LIEU OF FLEX

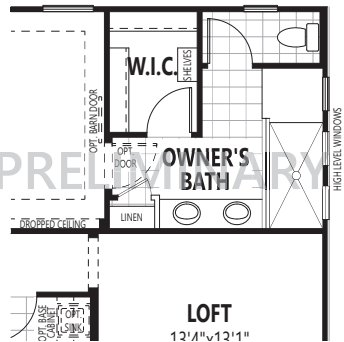


6 GUEST SUITE IN LIEU OF FLEX

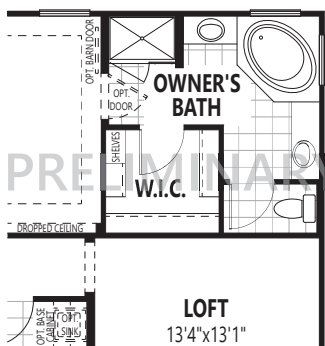


SECOND FLOOR

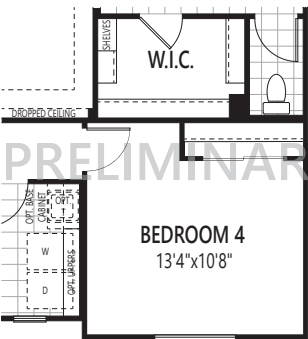
7 WALK-IN SHOWER AT OWNER'S BATH



8 OWNER'S BATH OASIS



9 BEDROOM 4 IN LIEU OF LOFT



F40H All plan illustrations are artist's concept and are not part of a legal contract. Specifications, terms and conditions are subject to change without notice. These floor plans, room dimensions and exterior foot prints only apply to The Western Farmhouse Elevation as far as listed base price. Note that plan square footages and room dimensions may vary according to elevation and options selected. Plan may be built as the mirror image. Flooring illustrations are used to show area of flooring, actual flooring type is specified on the Community Feature Sheet. Please consult your New Home Counselor for more details. E.&O.E. December 2018. December 2018 – Mattamy Homes Limited. ROC #249191B

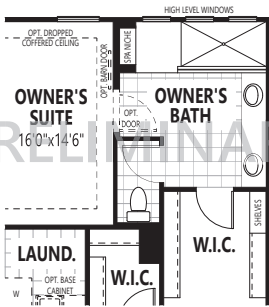




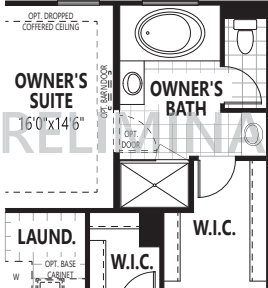
ARCHITECT'S CHOICE OPTIONS

SECOND FLOOR

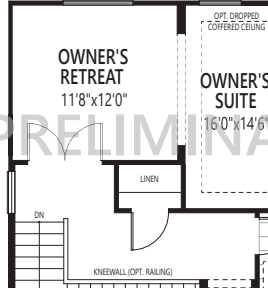
8 WALK-IN SHOWER AT OWNER'S BATH



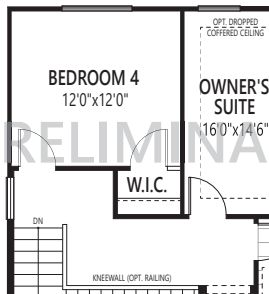
9 OWNER'S BATH OASIS



10 OWNER'S RETREAT IN LIEU OF LOFT



11 BEDROOM 4 IN LIEU OF LOFT



# THE JUNIPER

THE ARBOR COLLECTION

PRELIMINARY



SPANISH

PRELIMINARY



WESTERN FARMHOUSE

PRELIMINARY

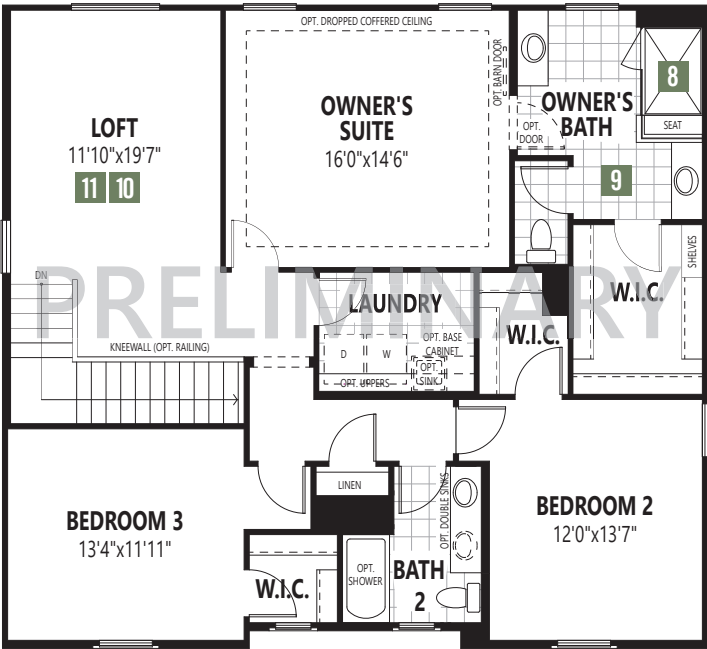


CRAFTSMAN

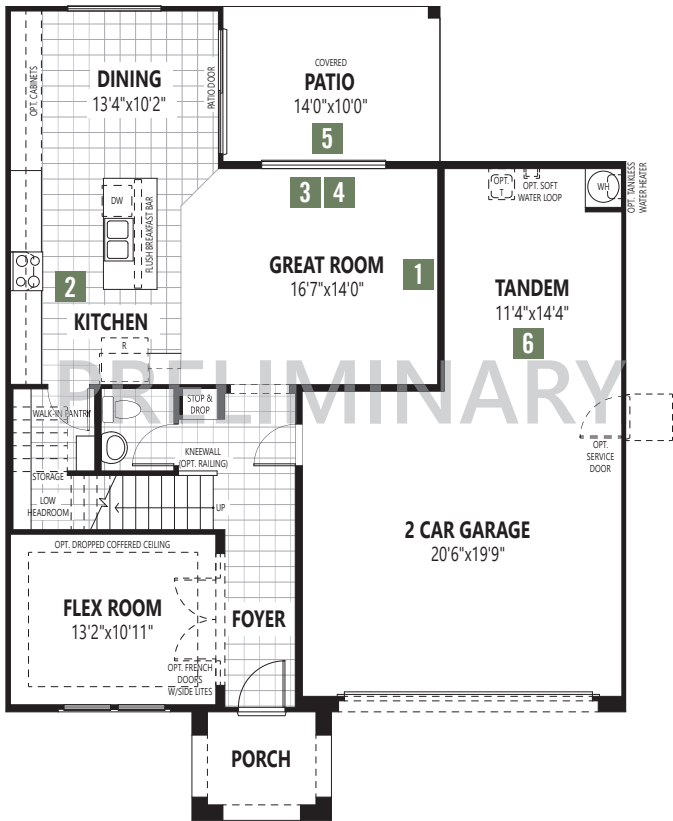
2,339 SQ.FT.

3 BEDROOM, 2.5 BATHROOM, 3 CAR TANDEM GARAGE





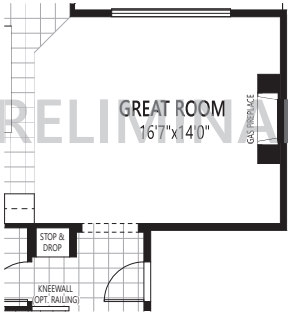
SECOND FLOOR



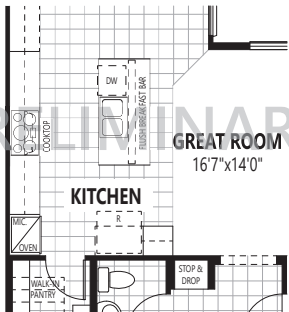
GROUND FLOOR

GROUND FLOOR

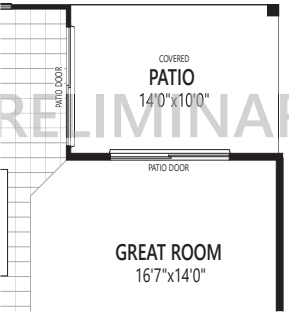
1 GAS FIREPLACE



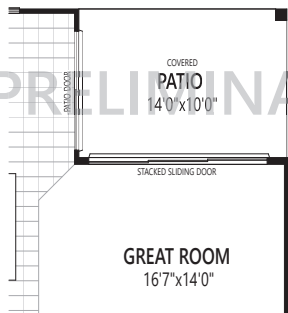
2 GOURMET KITCHEN



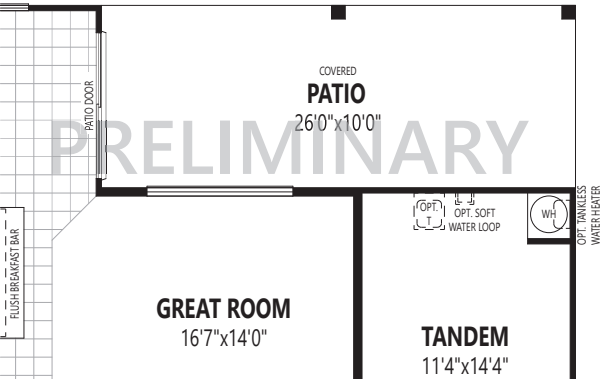
3 8' SLIDER AT GREAT ROOM



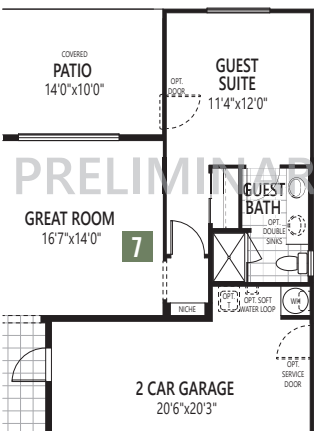
4 12' STACKED SLIDER OR CENTER SLIDER



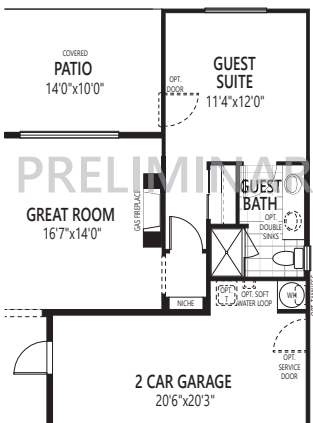
5 EXTENDED COVERED PATIO (Not Available w/Guest Suite)



6 GUEST SUITE IN LIEU OF TANDEM GARAGE



7 GAS FIREPLACE WHEN GUEST SUITE IS SELECTED



F40I All plan illustrations are artist's concept and are not part of a legal contract. Specifications, terms and conditions are subject to change without notice. These floor plans, room dimensions and exterior foot prints only apply to The Spanish Elevation as far as listed base price. Note that plan square footages and room dimensions may vary according to elevation and options selected. Plan may be built as the mirror image. Flooring illustrations are used to show area of flooring, actual flooring type is specified on the Community Feature Sheet. Please consult your New Home Counselor for more details. E.&O.E. December 2018.  
December 2018 – Mattamy Homes Limited. ROC #249191B



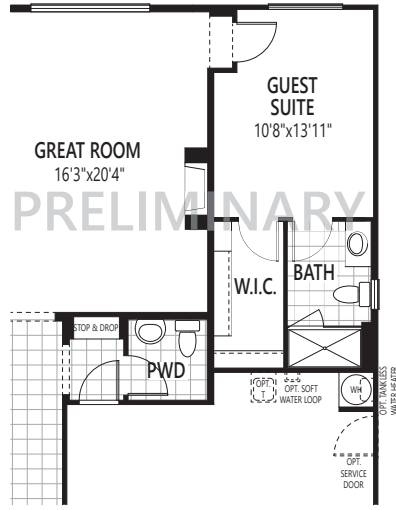
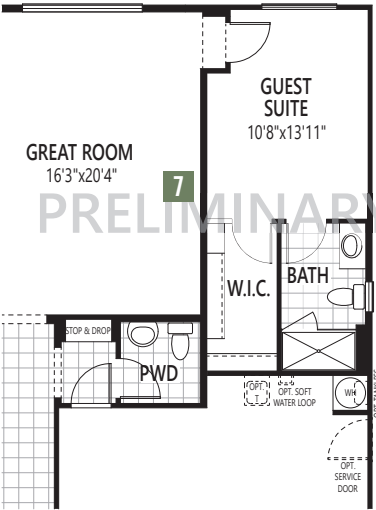


ARCHITECT'S CHOICE OPTIONS

GROUND FLOOR

6 GUEST SUITE IN LIEU OF TANDEM GARAGE

7 GAS FIREPLACE W/GUEST SUITE

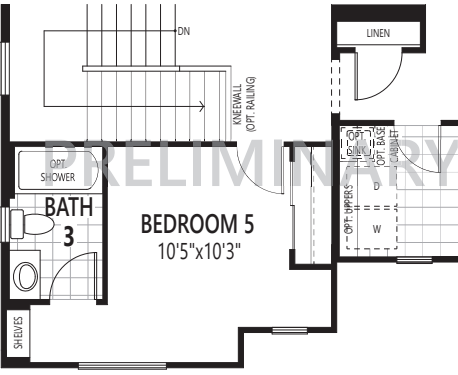
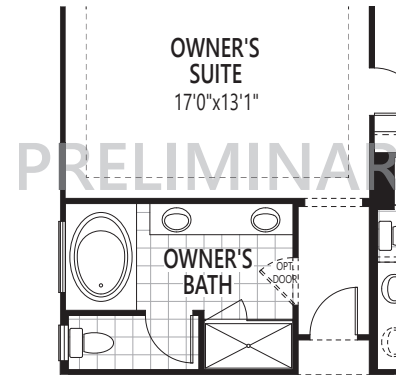
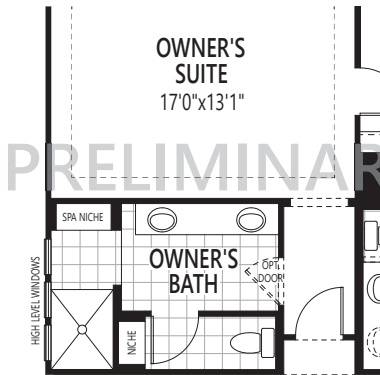


SECOND FLOOR

8 WALK-IN SHOWER AT OWNER'S BATH

9 OWNER'S BATH OASIS

10 BEDROOM 5 IN LIEU OF LOFT



THE MESQUITE

THE ARBOR COLLECTION

PRELIMINARY



WESTERN FARMHOUSE

PRELIMINARY



CRAFTSMAN

PRELIMINARY

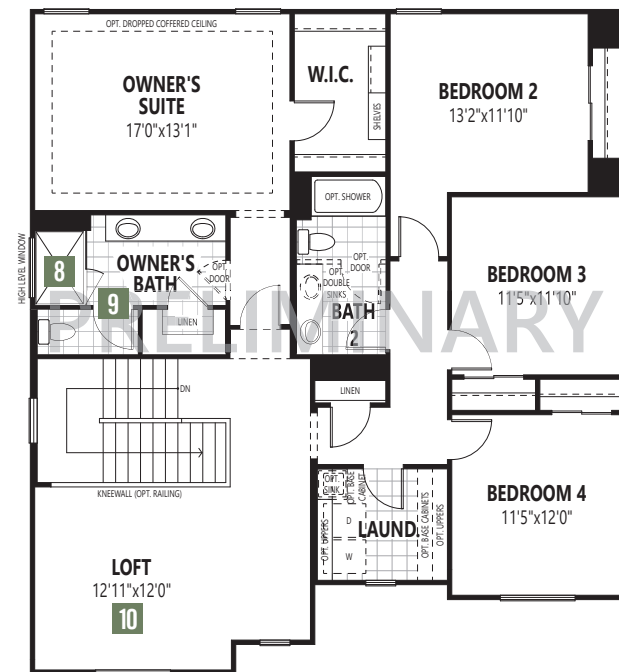


SPANISH

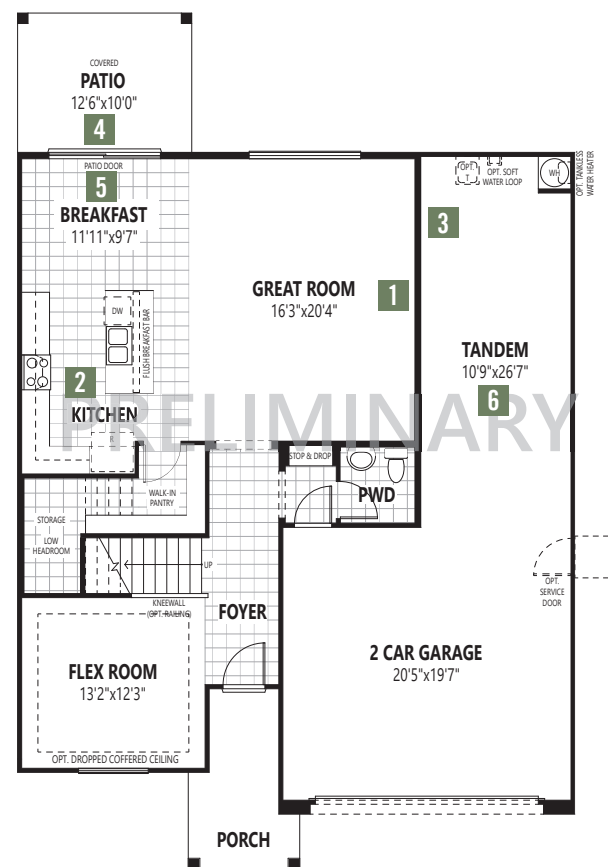
2,659 SQ.FT.

4 BEDROOM, 2.5 BATHROOM, 3 CAR TANDEM GARAGE





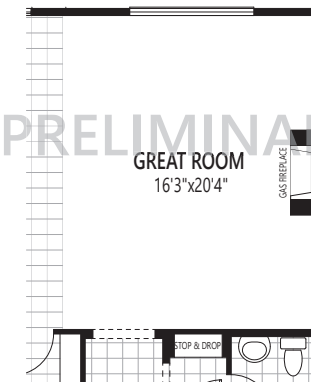
## SECOND FLOOR



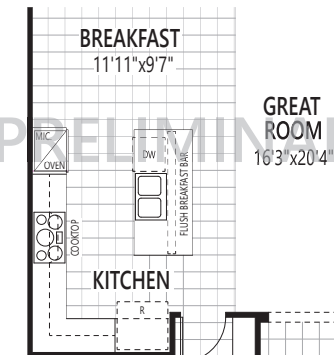
GROUND FLOOR

GROUND FLOOR

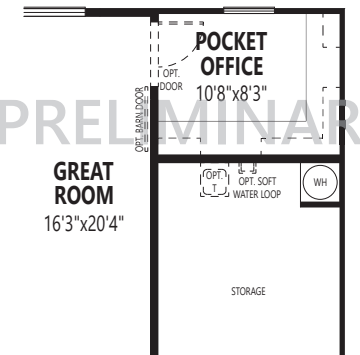
- ## 1 GAS FIREPLACE



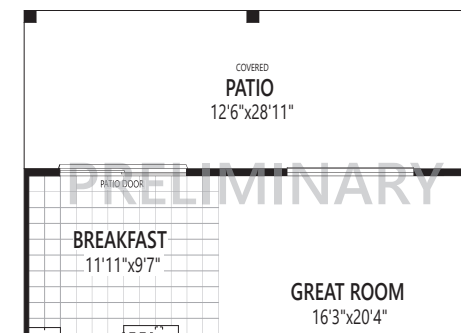
- ## 2 GOURMET KITCHEN



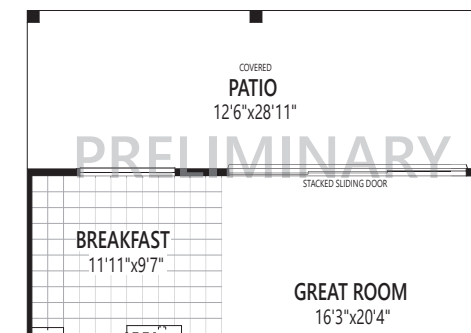
- ### 3 POCKET OFFICE



- #### 4 EXTENDED PATIO



- 5** 15' STACKED SLIDER  
(Only Available w/Extended Patio)



F40J All plan illustrations are artist's concept and are not part of a legal contract. Specifications, terms and conditions are subject to change without notice. These floor plans, room dimensions and exterior foot prints only apply to The Western Farmhouse Elevation as far as listed base price. Note that plan square footages and room dimensions may vary according to elevation and options selected. Plan may be built as the mirror image. Flooring illustrations are used to show area of flooring, actual flooring type is specified on the Community Feature Sheet. Please consult your New Home Counselor for more details. E.&O.E. December 2018.  
December 2018 – Mattamy Homes Limited. ROC #249191B