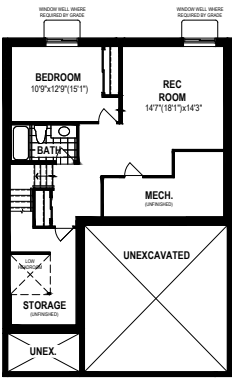
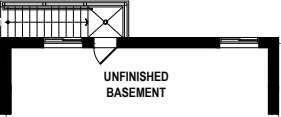


Basement Options

1 Finished Basement



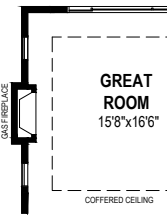
2 Basement Entry



BASEMENT PLAN

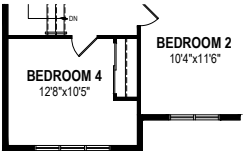
Main Floor Options

3 Fireplace Windows

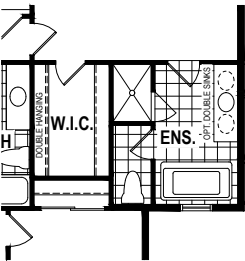


Second Floor Options

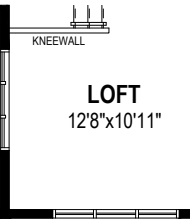
4 4 Bedroom Plan



5 Bath Oasis



6 Loft Windows



A38Q All illustrations are artist's concept. Specifications, terms and conditions are subject to change without notice. These floor plans and room dimensions apply to elevation 'Craftsman' of this model type. Note that plans and room dimensions may vary according to elevation. Plan may be built as the mirror image. "Quiet wall" (where shown) means a wall in which additional insulation has been installed. This will assist in reducing, but not eliminating, ambient sound from adjoining rooms and mechanical systems. The extent of the reduction will vary depending upon various factors including, without limitation, the presence and extent of mechanical systems located in the wall. Please consult your sales representative. E.&O.E. April 2020 – Copyright 2020 – Mattamy Homes Limited.

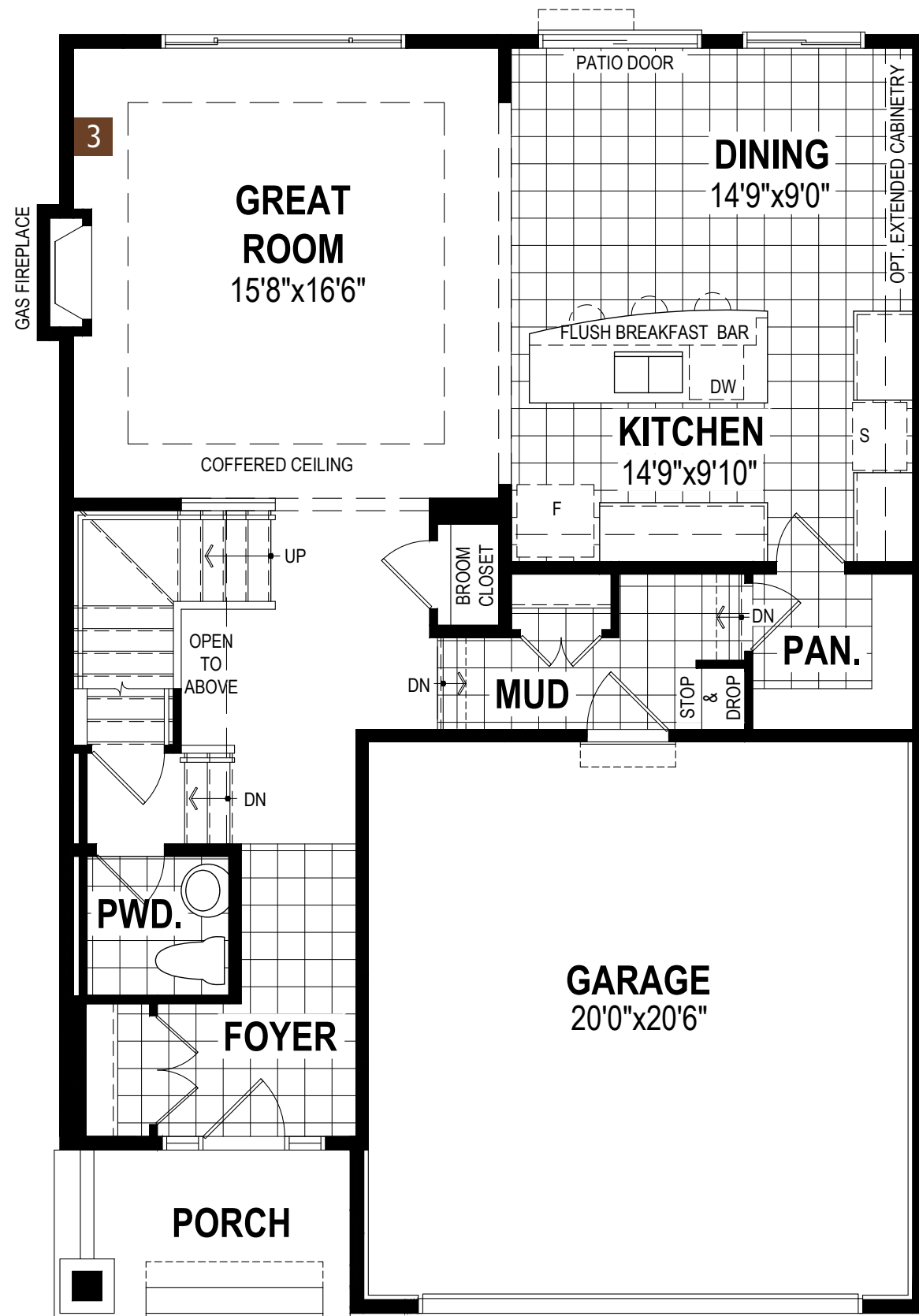
See a sales representative for additional Architect's Choice Options to choose from.

40' SINGLE FAMILY HOME

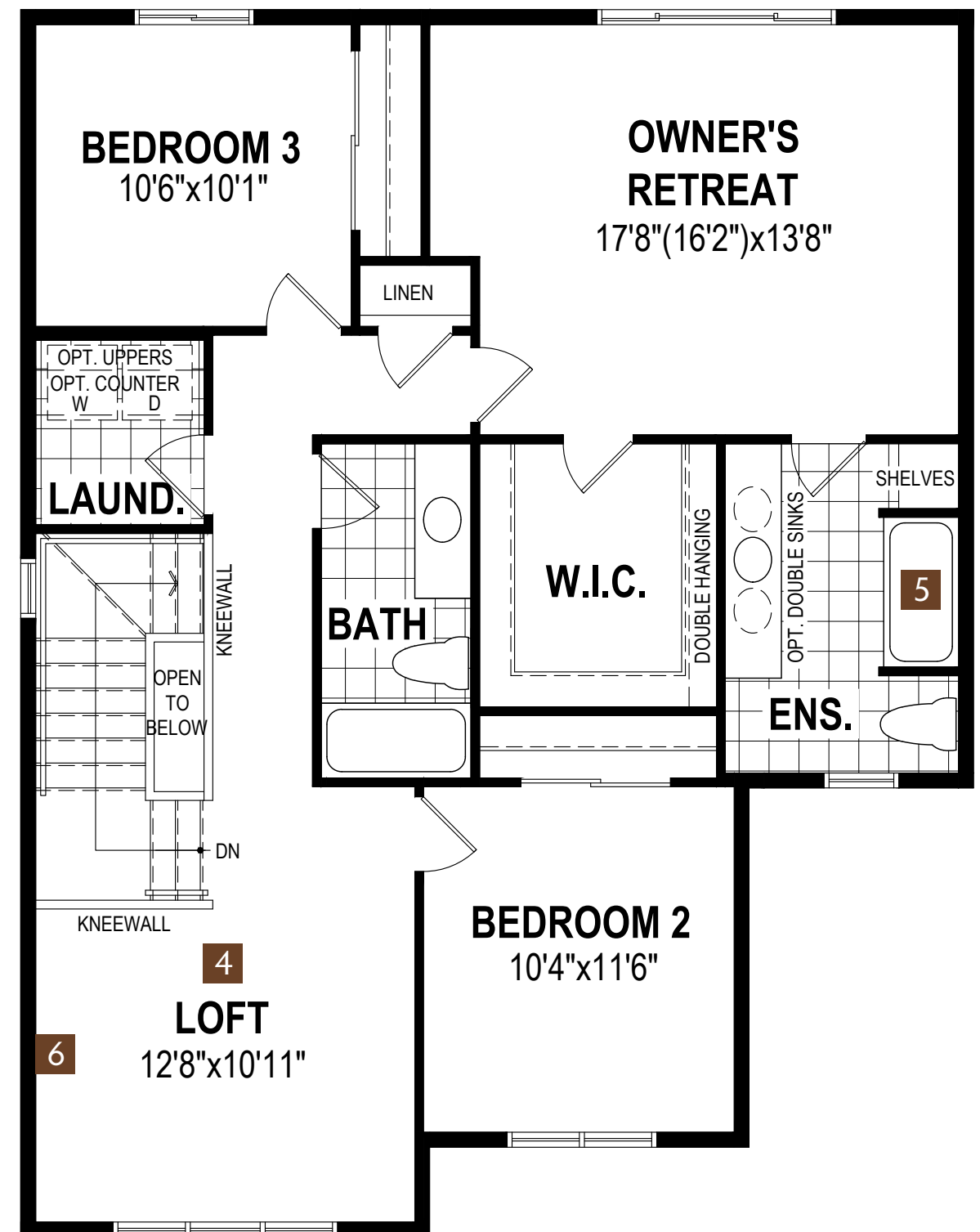
The Riedel

2,093 SQ.FT.

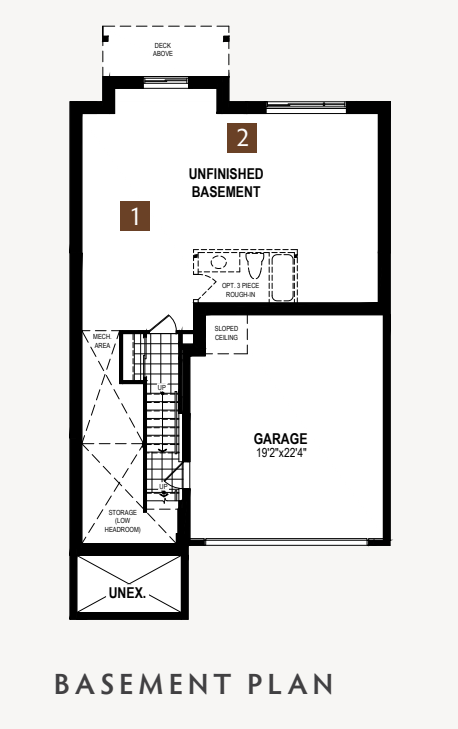




MAIN FLOOR PLAN

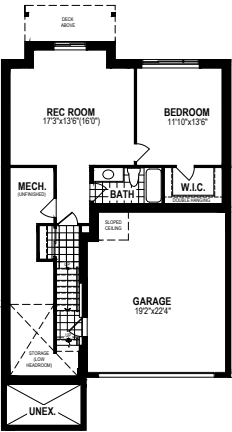


SECOND FLOOR PLAN

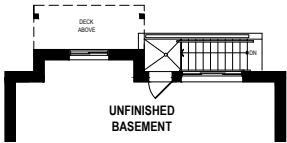


Basement Options

1 Finished Basement



2 Basement Entry



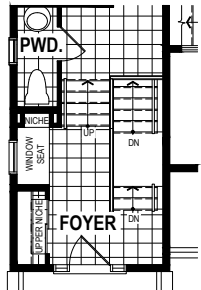
BASEMENT PLAN

Main Floor Options

3 Gas Fireplace



4 Foyer Niche

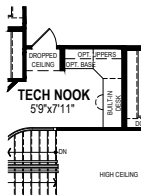


5 Great Room Open To Foyer

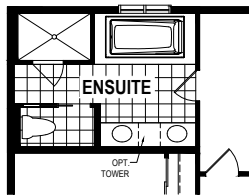


Second Floor Options

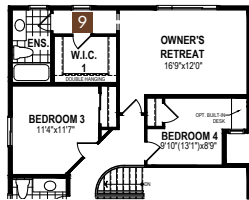
6 Tech Nook In Lieu Of Laundry



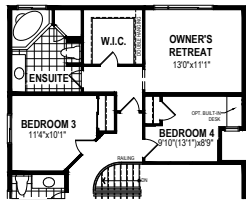
7 Bath Oasis



8 4 Bedroom Plan



9 Bath Oasis (4 Bedroom)



A38T All illustrations are artist's concept. Specifications, terms and conditions are subject to change without notice. These floor plans and room dimensions apply to elevation 'Craftsman' of this model type. Note that plans and room dimensions may vary according to elevation. Plan may be built as the mirror image. "Quiet wall" (where shown) means a wall in which additional insulation has been installed. This will assist in reducing, but not eliminating, ambient sound from adjoining rooms and mechanical systems. The extent of the reduction will vary depending upon various factors including, without limitation, the presence and extent of mechanical systems located in the wall. Please consult your sales representative. E.&O.E. April 2020 – Copyright 2020 – Mattamy Homes Limited.

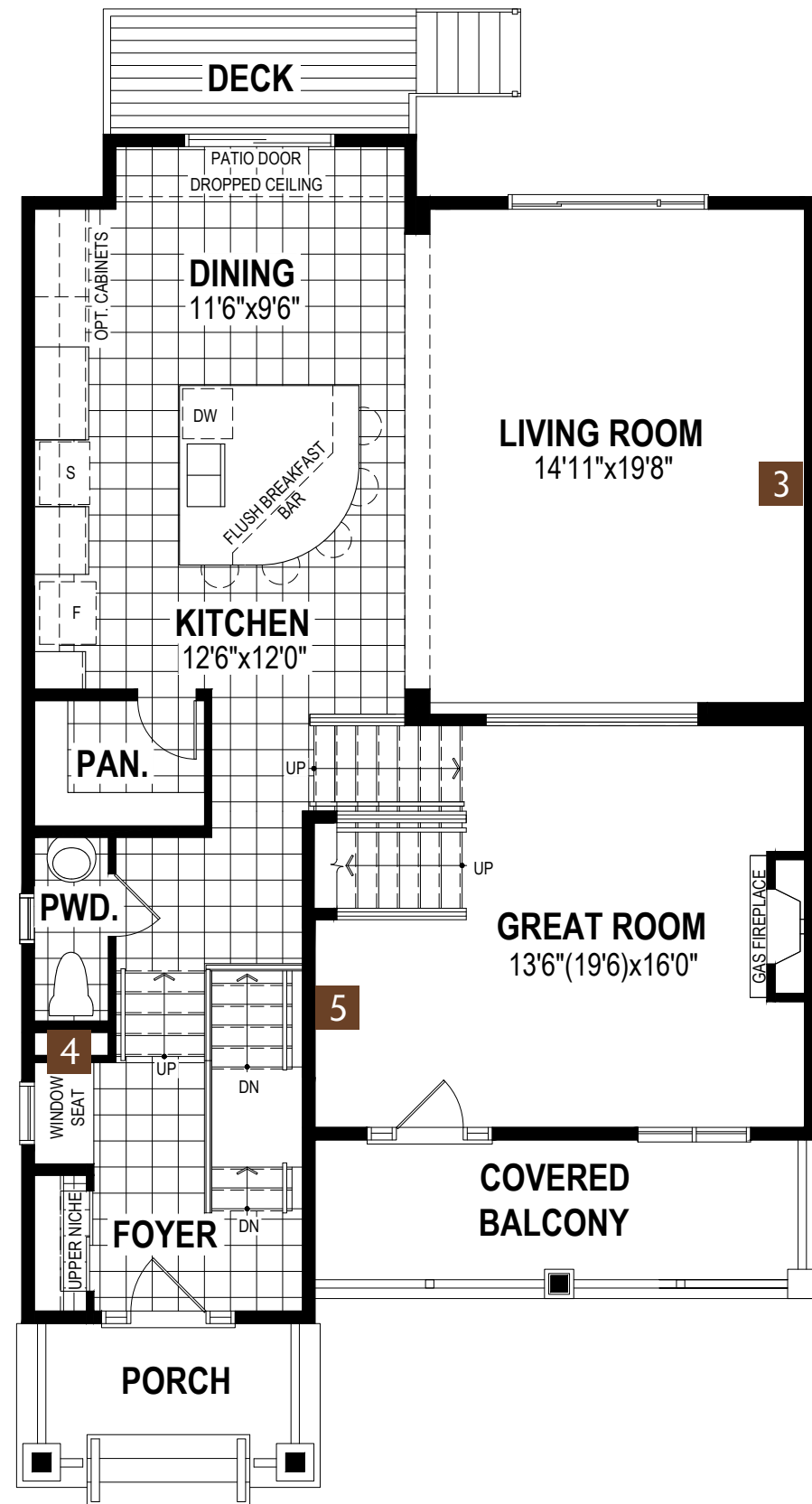
See a sales representative for additional Architect's Choice Options to choose from.

40' SINGLE FAMILY HOME

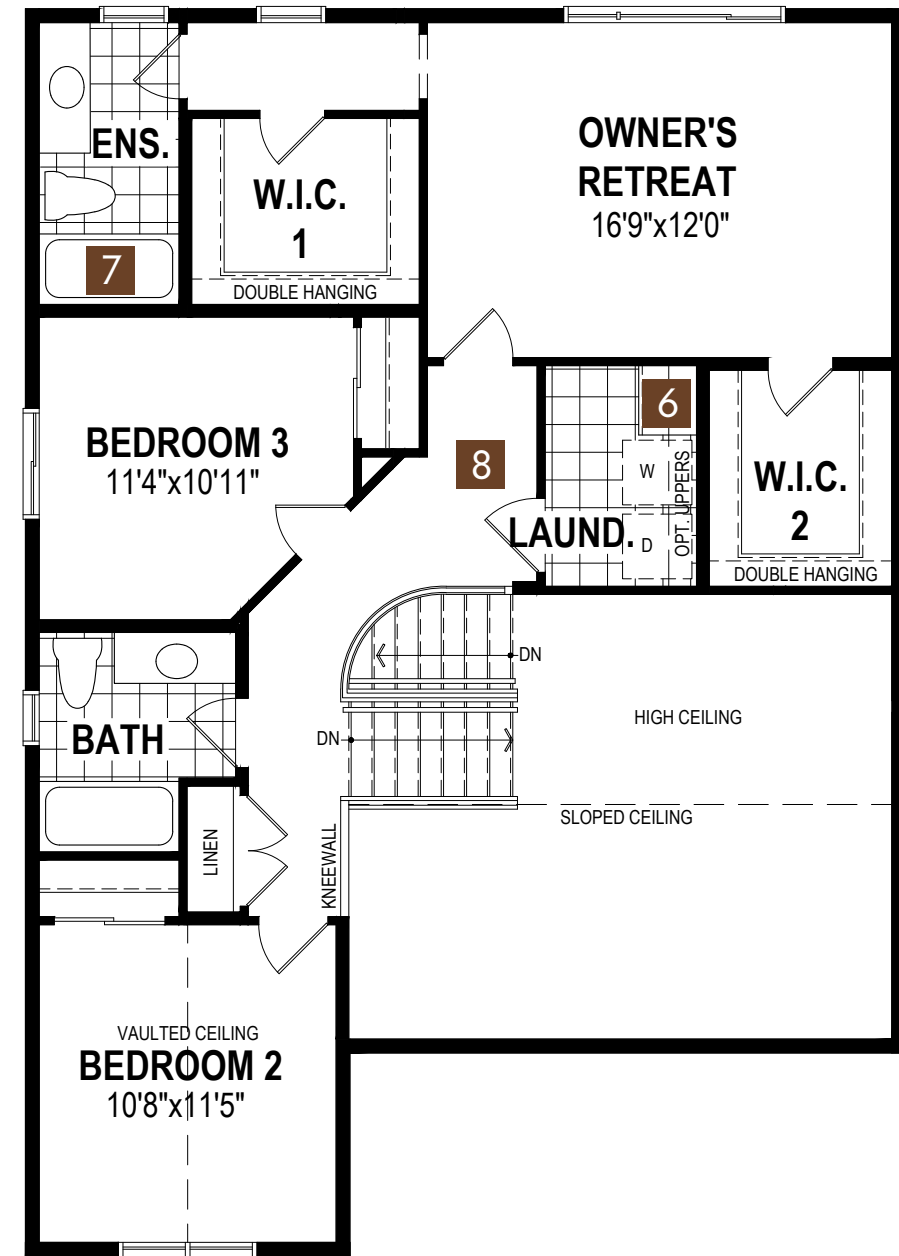
The Onyx

2,265 SQ.FT.

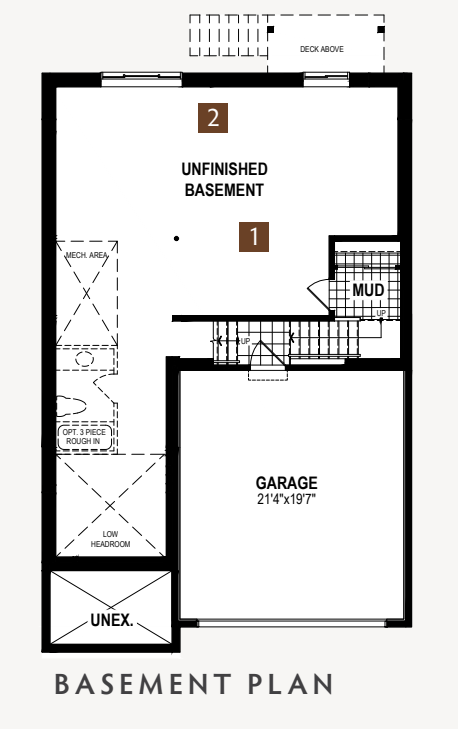




MAIN FLOOR PLAN

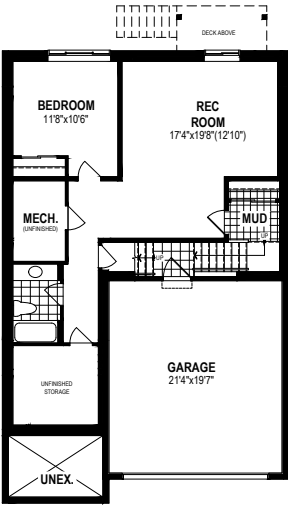


SECOND FLOOR PLAN

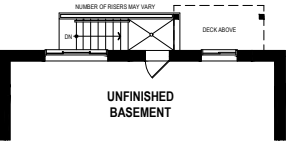


Basement Options

1 Finished Basement

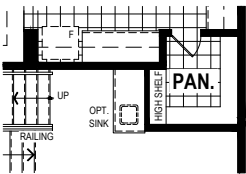


2 Basement Entry

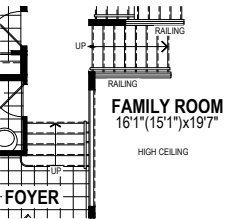


Main Floor Options

3 Bar In Family Room

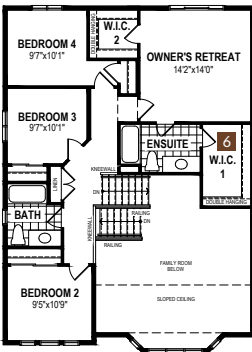


4 Family Room Open To Foyer

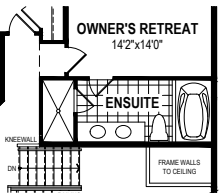


Second Floor Options

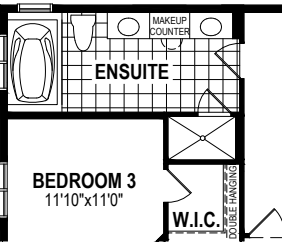
5 4 Bedroom Plan



6 Bath Oasis (4 Bedroom)



7 Bath Oasis



A38P All illustrations are artist's concept. Specifications, terms and conditions are subject to change without notice. These floor plans and room dimensions apply to elevation 'Craftsman' of this model type. Note that plans and room dimensions may vary according to elevation. Plan may be built as the mirror image. "Quiet wall" (where shown) means a wall in which additional insulation has been installed. This will assist in reducing, but not eliminating, ambient sound from adjoining rooms and mechanical systems. The extent of the reduction will vary depending upon various factors including, without limitation, the presence and extent of mechanical systems located in the wall. Please consult your sales representative. E.&O.E. April 2020 – Copyright 2020 – Mattamy Homes Limited.

See a sales representative for additional Architect's Choice Options to choose from.

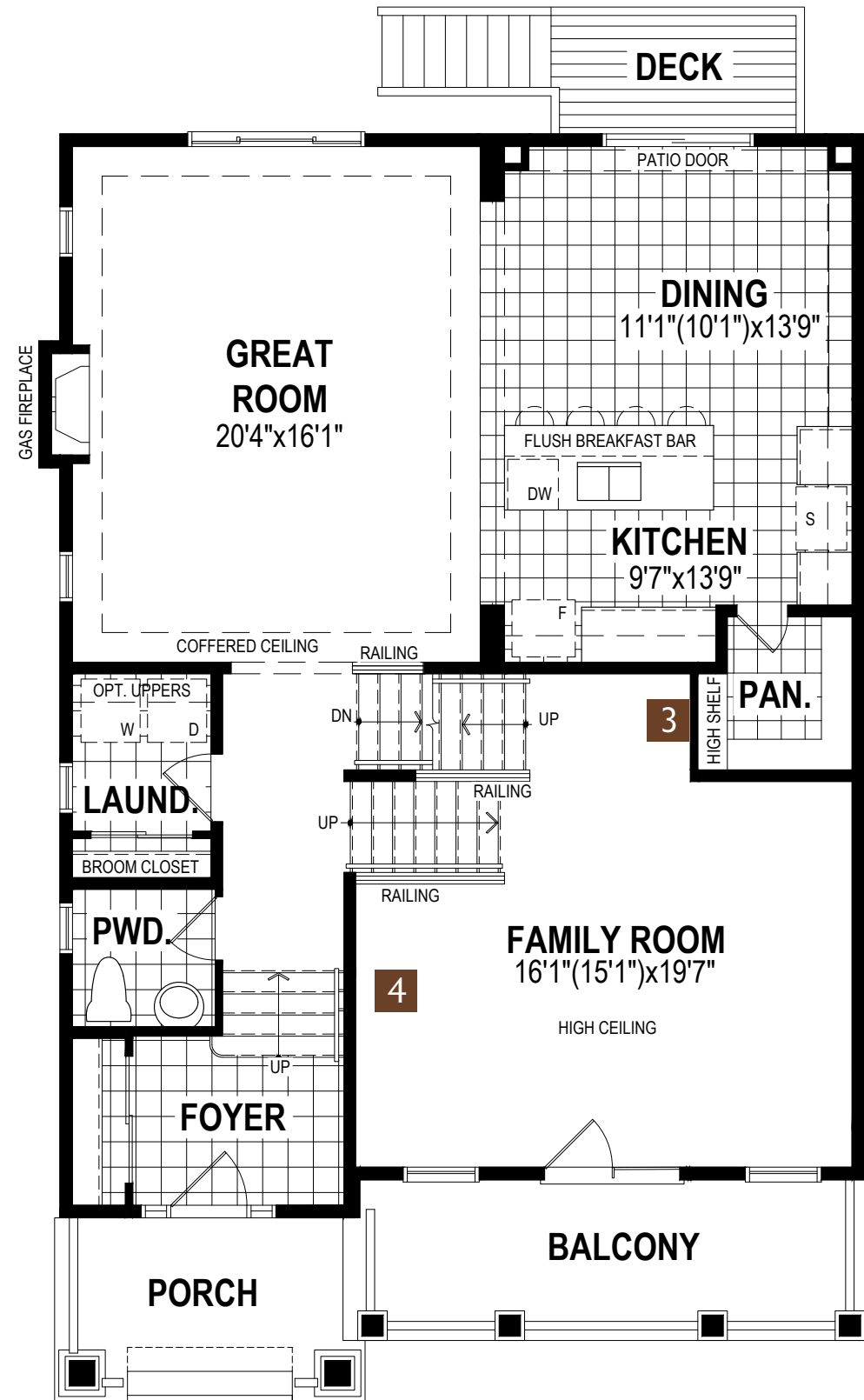
40' SINGLE FAMILY HOME

The Pearl

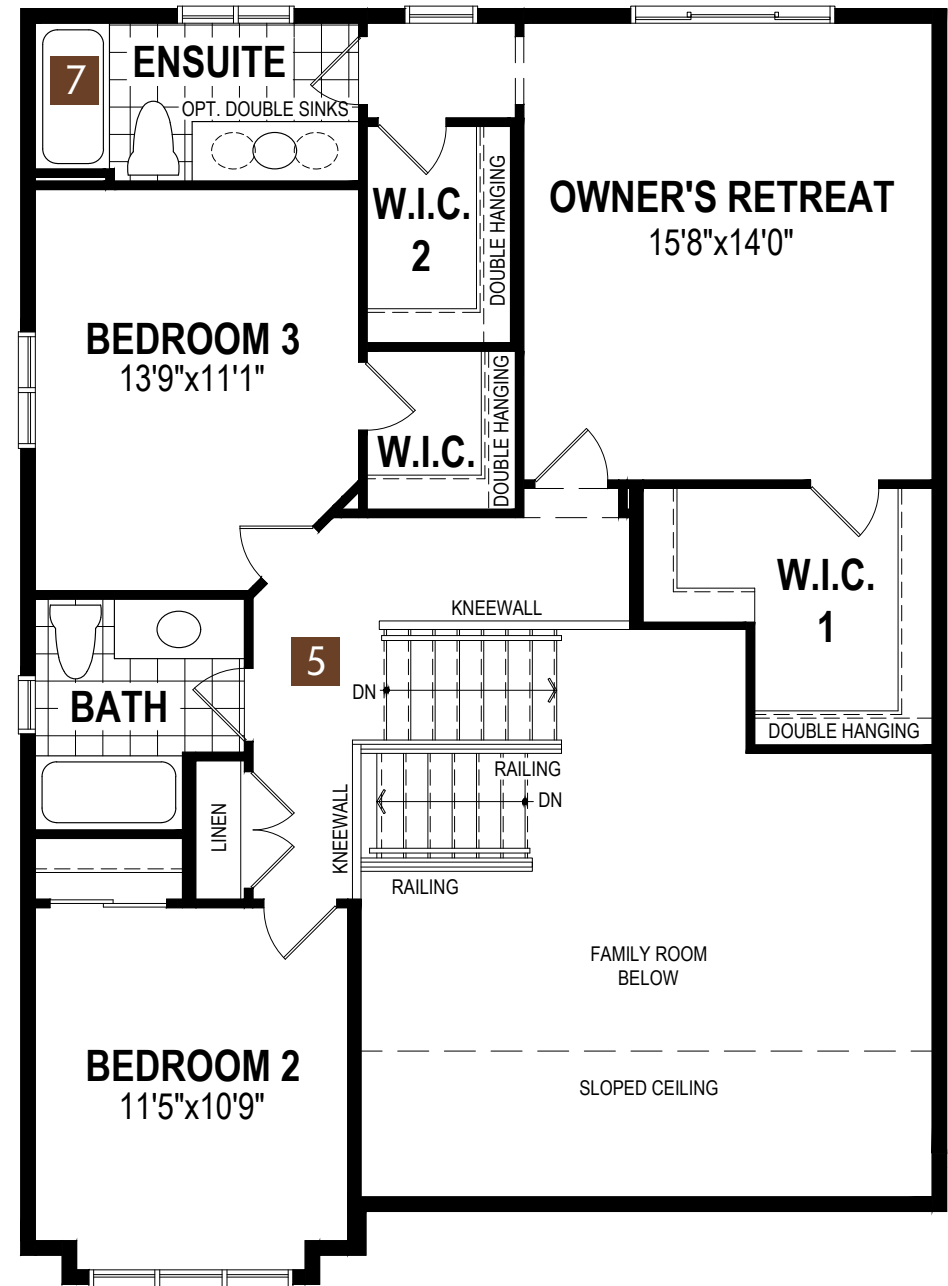
2,282 SQ.FT.

Southwinds
in Airdrie

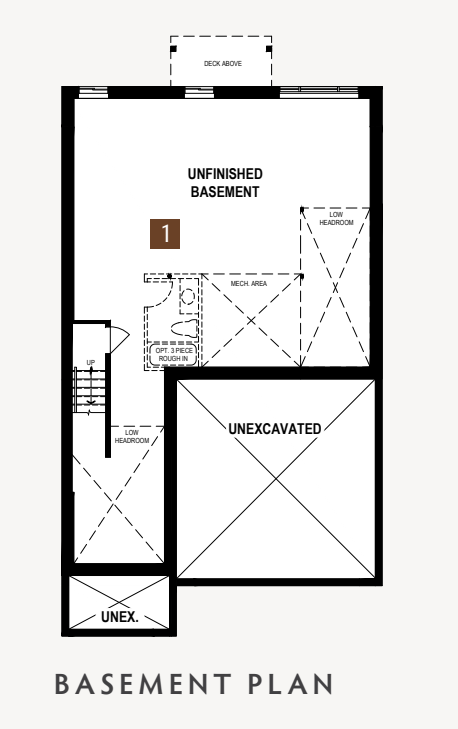




MAIN FLOOR PLAN



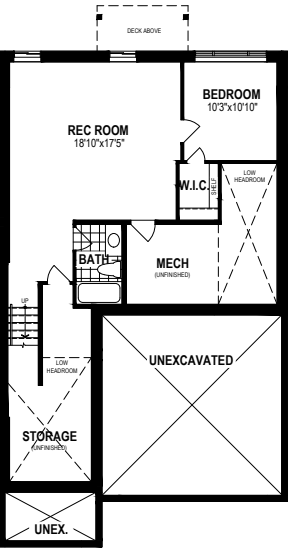
SECOND FLOOR PLAN



BASEMENT PLAN

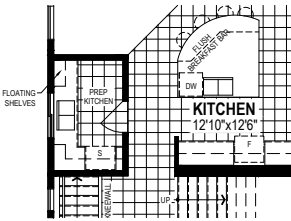
Basement Options

1 Finished Basement

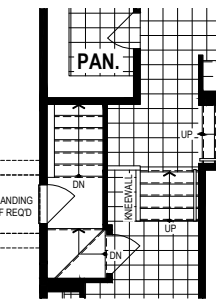


Main Floor Options

2 Prep Kitchen

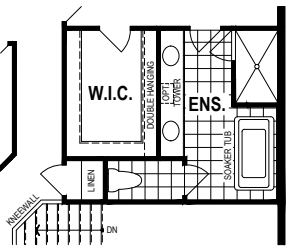


3 Side Entry

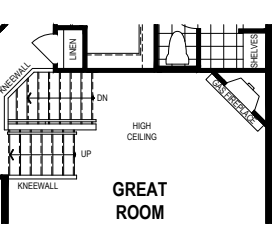


Second Floor Options

4 Bath Oasis



5 Great Room Fireplace



A38S All illustrations are artist's concept. Specifications, terms and conditions are subject to change without notice. These floor plans and room dimensions apply to elevation 'Prairie' of this model type. Note that plans and room dimensions may vary according to elevation. Plan may be built as the mirror image. "Quiet wall" (where shown) means a wall in which additional insulation has been installed. This will assist in reducing, but not eliminating, ambient sound from adjoining rooms and mechanical systems. The extent of the reduction will vary depending upon various factors including, without limitation, the presence and extent of mechanical systems located in the wall. Please consult your sales representative. E.&O.E. April 2020 – Copyright 2020 – Mattamy Homes Limited.

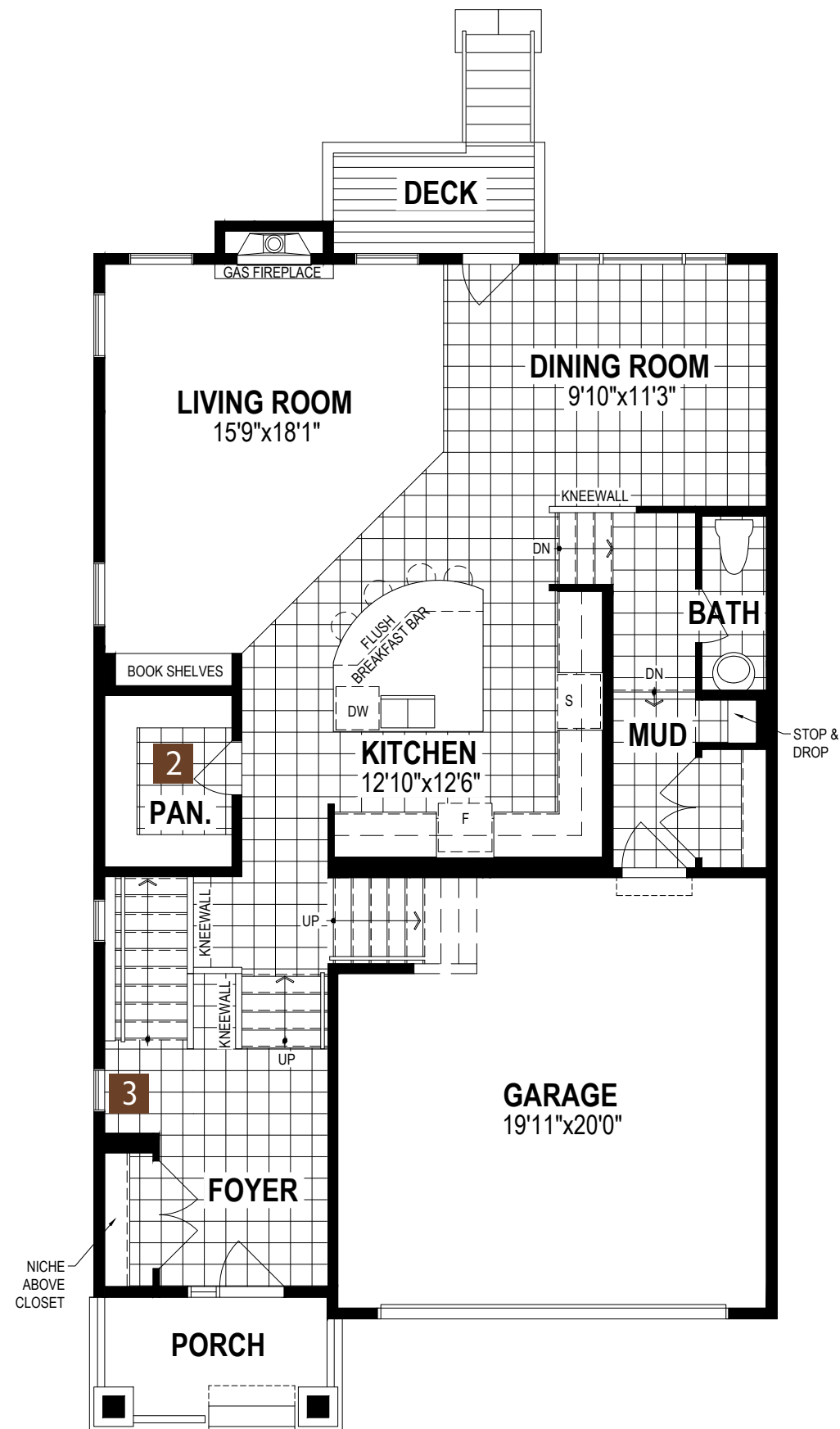
See a sales representative for additional Architect's Choice Options to choose from.

40' SINGLE FAMILY HOME

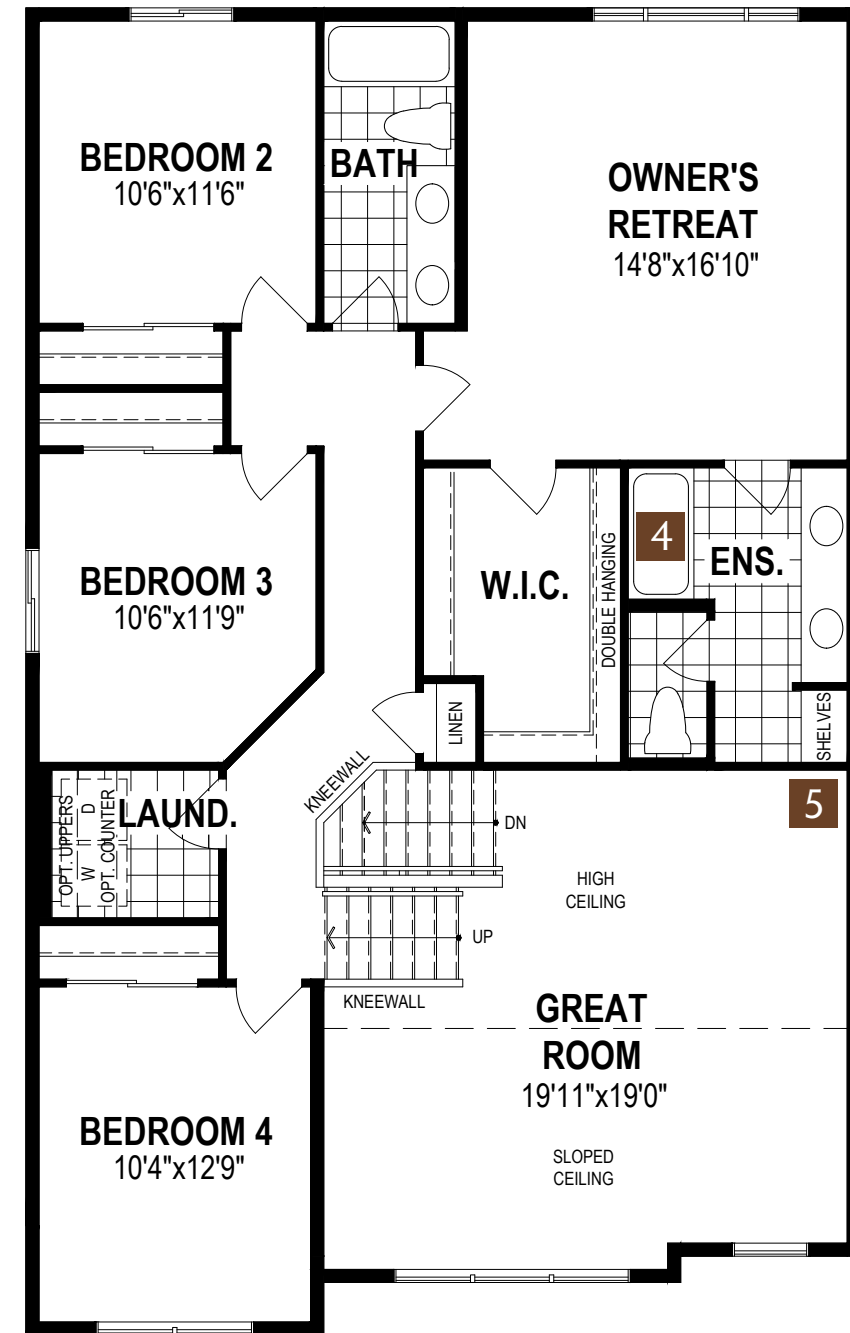
The Bradford 2,711 SQ.FT.

Southwinds
in Airdrie

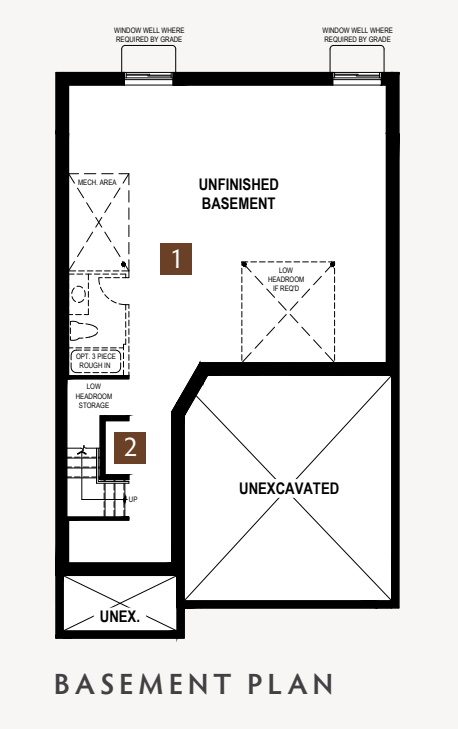




MAIN FLOOR PLAN

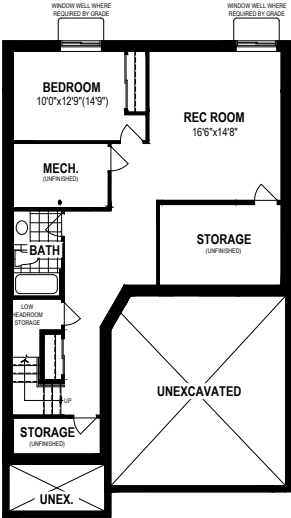


SECOND FLOOR PLAN

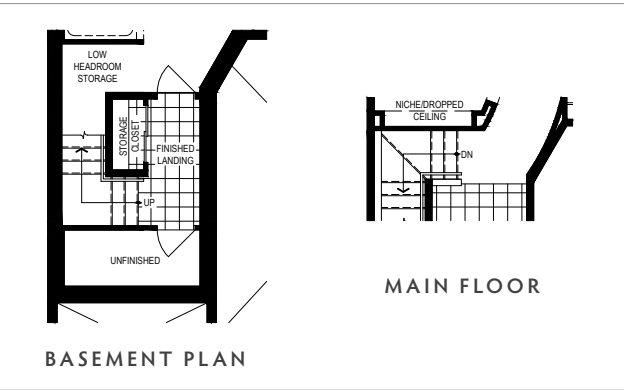


Basement Options

1 Finished Basement

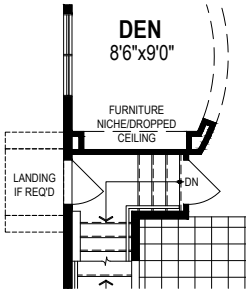


2 Next Step Basement Plan & Main Floor Plan

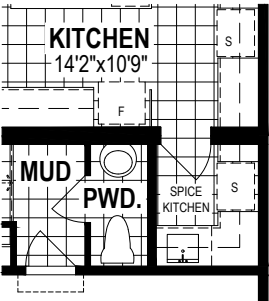


Main Floor Options

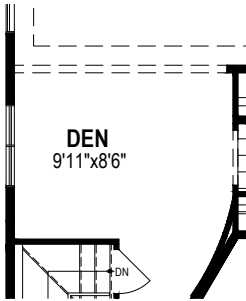
3 Side Entry



4 Spice Kitchen

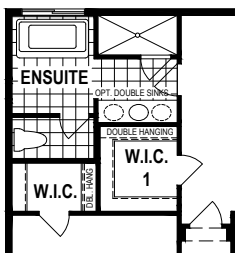


5 Den Wall Removed

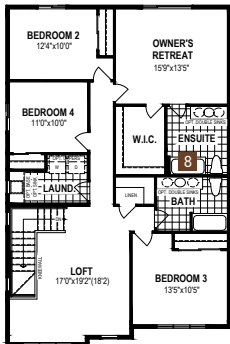


Second Floor Options

6 Bath Oasis



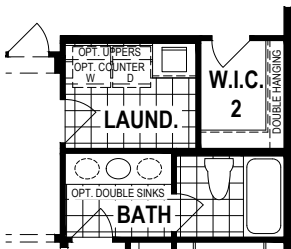
7 4 Bedroom Plan



8 Bath Oasis (4 Bedroom)



9 Larger Laundry



A38R All illustrations are artist's concept. Specifications, terms and conditions are subject to change without notice. These floor plans and room dimensions apply to elevation 'Craftsman' of this model type. Note that plans and room dimensions may vary according to elevation. Plan may be built as the mirror image. "Quiet wall" (where shown) means a wall in which additional insulation has been installed. This will assist in reducing, but not eliminating, ambient sound from adjoining rooms and mechanical systems. The extent of the reduction will vary depending upon various factors including, without limitation, the presence and extent of mechanical systems located in the wall. Please consult your sales representative. E.&O.E. April 2020 – Copyright 2020 – Mattamy Homes Limited.

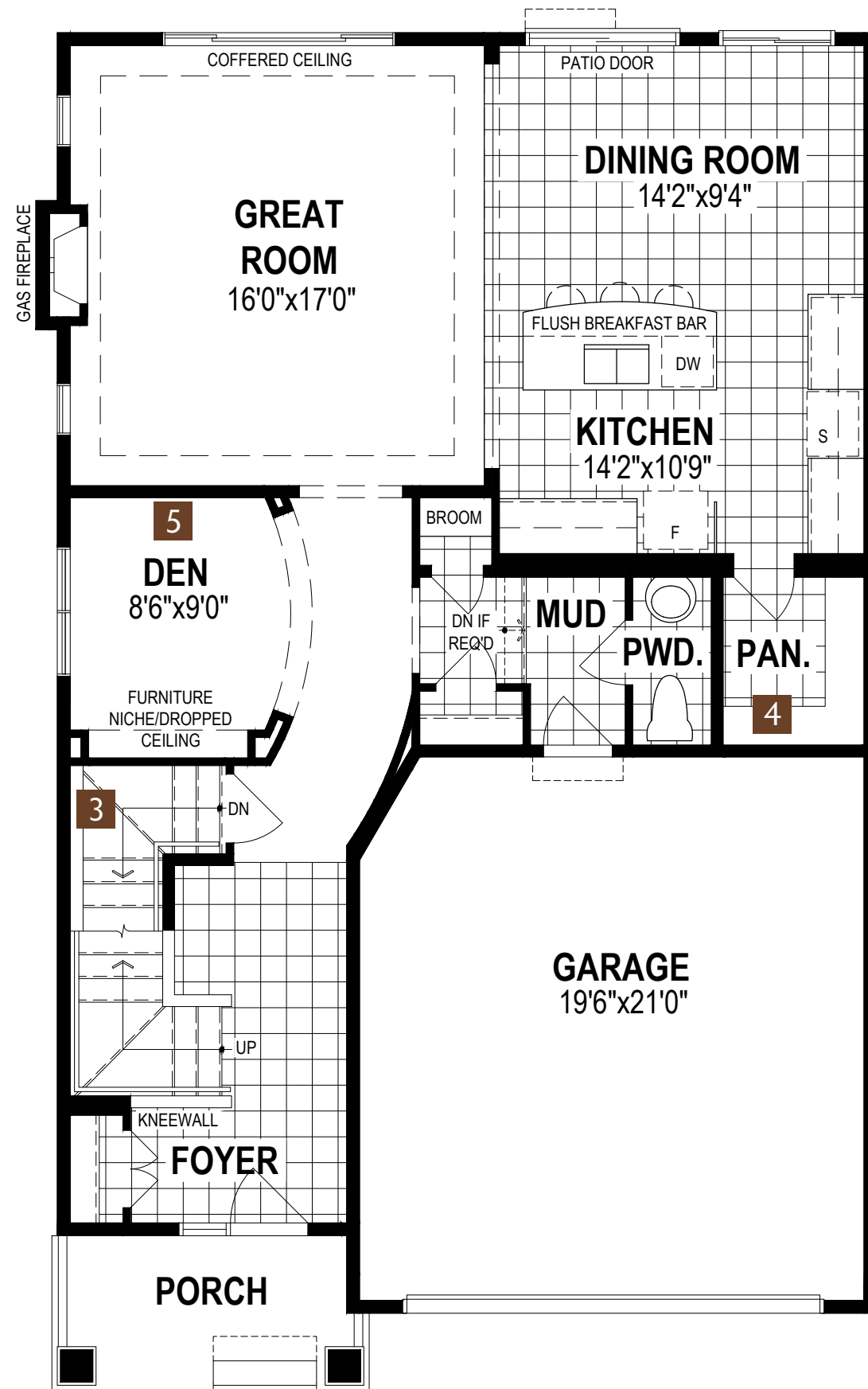
See a sales representative for additional Architect's Choice Options to choose from.

40' SINGLE FAMILY HOME

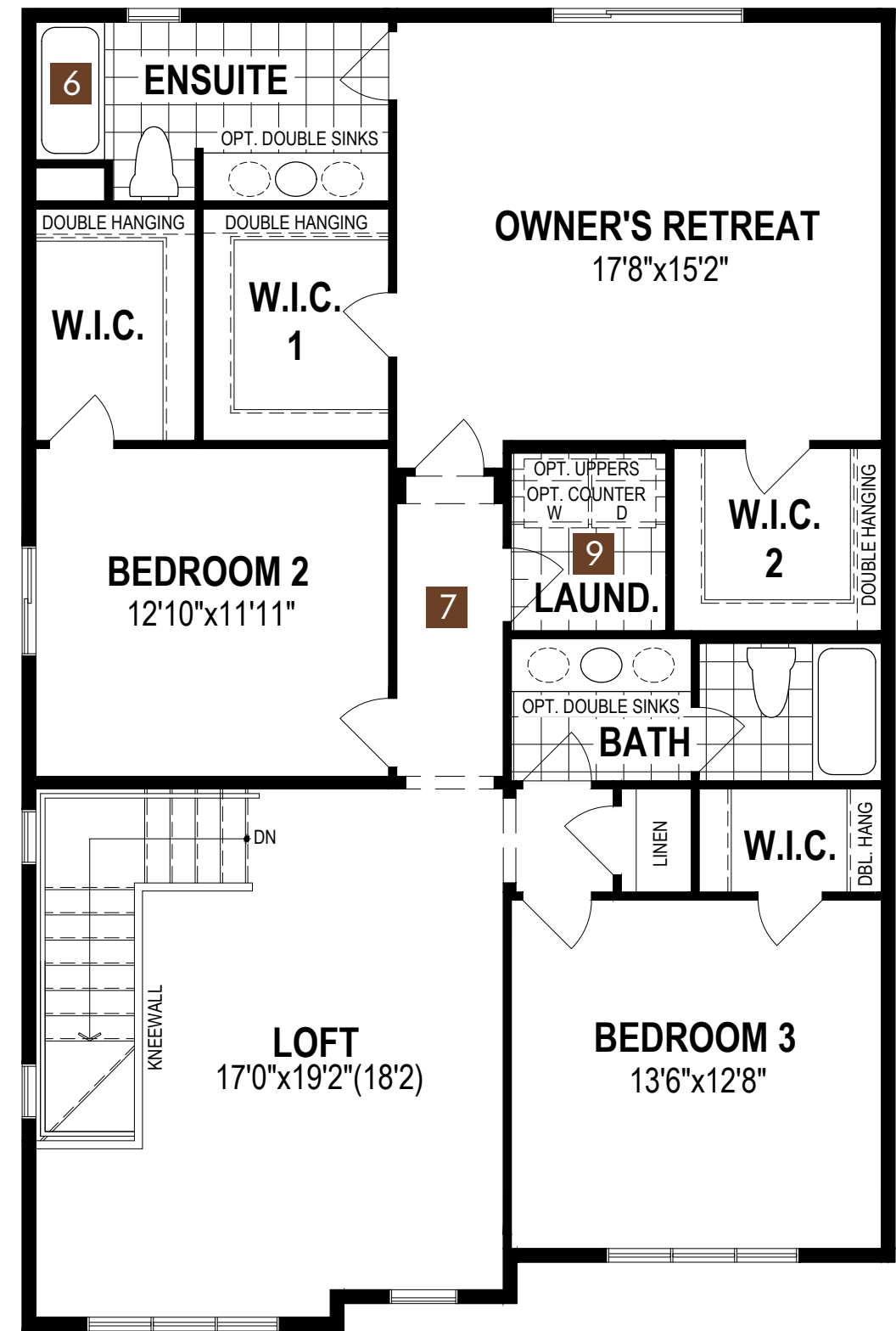
The Jade

2,544 SQ.FT.

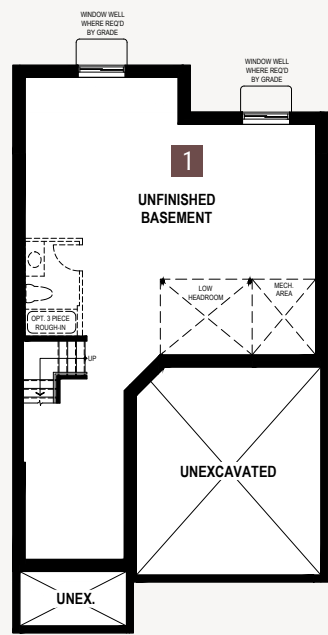




MAIN FLOOR PLAN



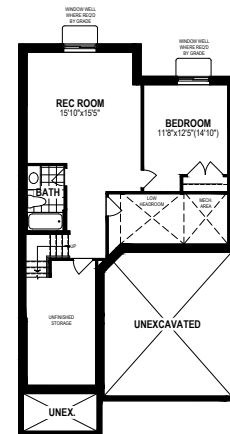
SECOND FLOOR PLAN



BASEMENT PLAN

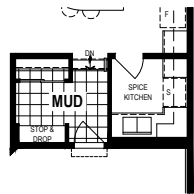
Basement Options

1 Finished Basement

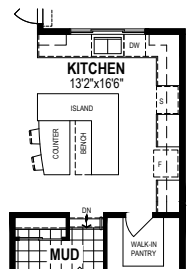


Main Floor Options

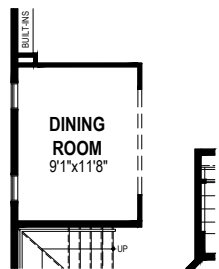
2 Spice Kitchen



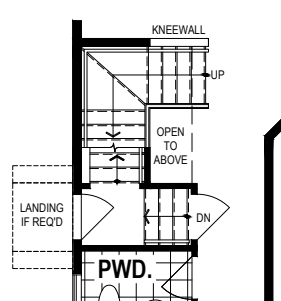
3 Alternate Kitchen Island



4 Framed In Dining Room

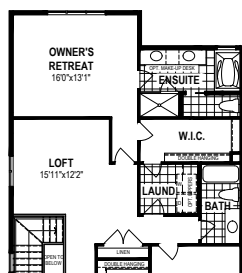


5 Side Entry

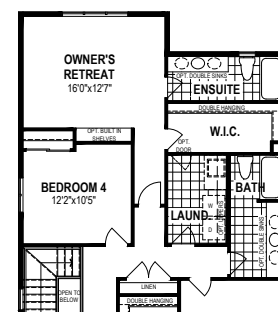


Second Floor Options

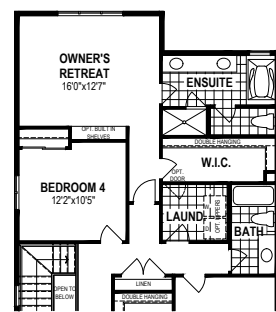
6 Bath Oasis



7 4 Bedroom Plan



8 4 Bedroom Plan w/ Bath Oasis



A38U All illustrations are artist's concept. Specifications, terms and conditions are subject to change without notice. These floor plans and room dimensions apply to elevation 'Craftsman' of this model type. Note that plans and room dimensions may vary according to elevation. Plan may be built as the mirror image. "Quiet wall" (where shown) means a wall in which additional insulation has been installed. This will assist in reducing, but not eliminating, ambient sound from adjoining rooms and mechanical systems. The extent of the reduction will vary depending upon various factors including, without limitation, the presence and extent of mechanical systems located in the wall. Please consult your sales representative. E.&O.E. April 2020 – Copyright 2020 – Mattamy Homes Limited.

See a sales representative for additional Architect's Choice Options to choose from.

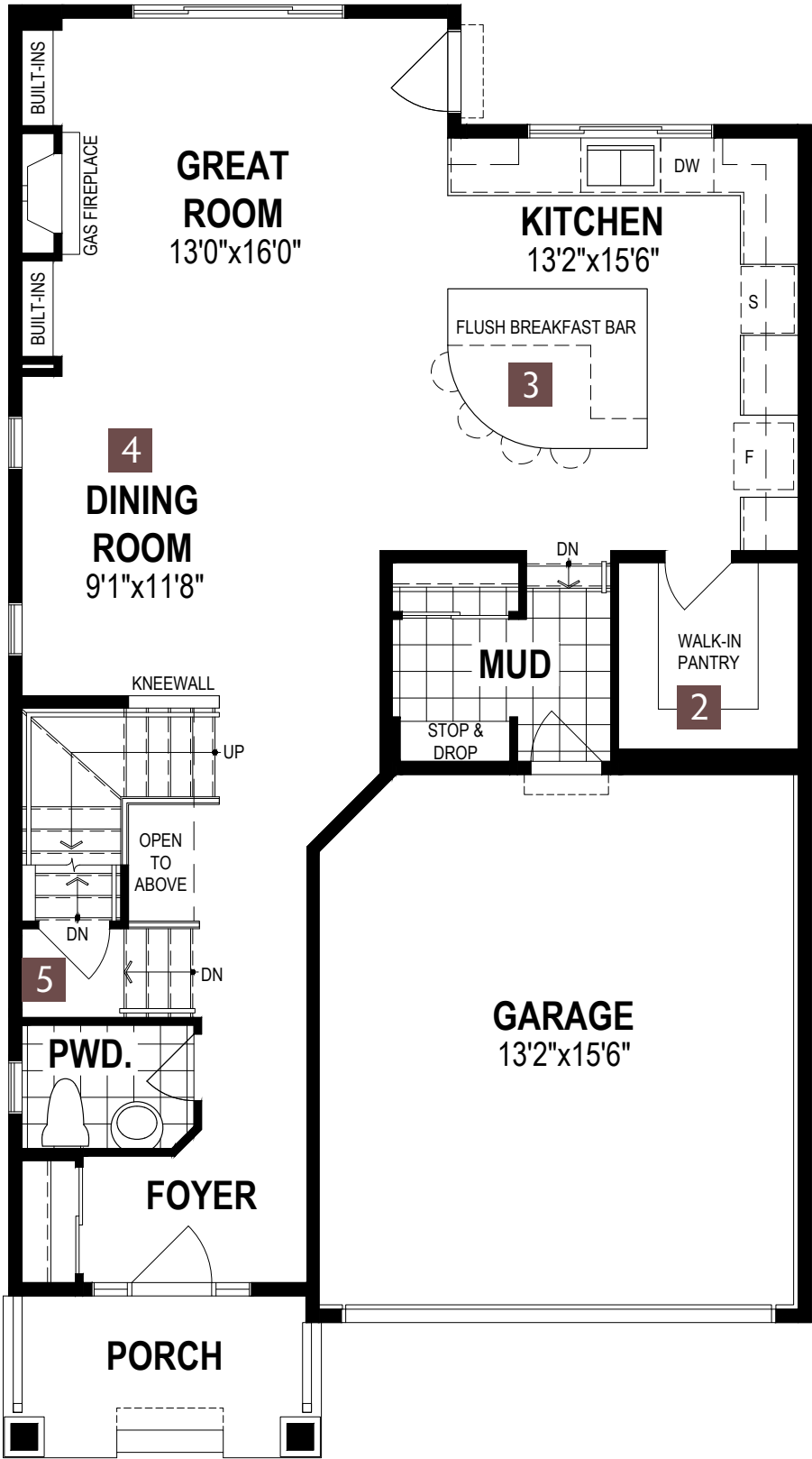
40' SINGLE FAMILY HOME

The Slate

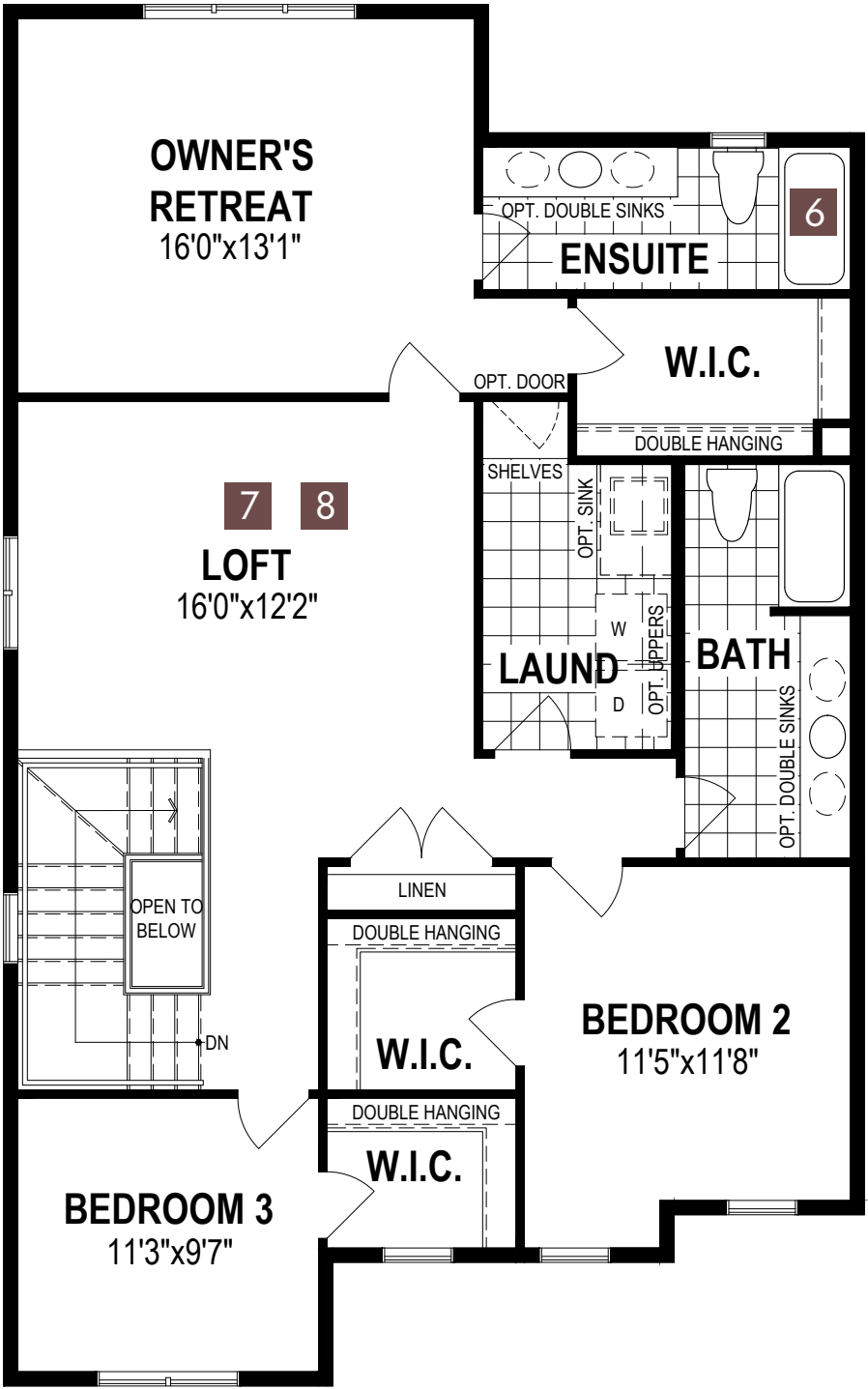
2,282 SQ.FT.

Southwinds
in Airdrie





MAIN FLOOR PLAN



SECOND FLOOR PLAN